



**BEAUTIFUL
JUNK**

**SHARK
TEETH
FILMS**

BEAUTIFUL JUNK

THE SERIES

Imagine it's the year 2037, and the Earth's resources have been depleted. Humanity has been pushed to the fringes, but artists still must create. Without any remaining traditional materials, they are forced to use the only commodity still in plentiful supply...**JUNK!** Tons of junk in endless varieties, and from countless sources.

Set on a desolate desert plain, BEAUTIFUL JUNK assembles 10 motley teams of the greatest junk artists in the world, who specialize in designing and building unimaginable sculptures with found materials, and pits them against each other in an arched competition unlike anything ever seen.

BEAUTIFUL JUNK is a rollicking spectacle that shows what happens when ingenuity and craftsmanship collide with scarcity. The result is truly spectacular!



THE TONE

BEAUTIFUL JUNK is playfully set in what feels like a near dystopian future. The world is reminiscent of MAD MAX, yet playful like Wes Anderson, and whimsical like THE BIG FLOWER FLIGHT.

Teams are plucked from the fringes of the art and building world. They are outsiders, with quirky and eccentric personalities that keep the tone of the series spontaneous, light, and somewhat tongue-in-cheek. Creating mammoth sculptures out of garbage in the middle of the desert should be fun, after all.

Though bizarre, junk art is a legitimate form of artistic expression and its practitioners are just as passionate as those who choose to work with more traditional mediums. The wild characters of BEAUTIFUL JUNK are the heart and soul of the series - they are real, skilled, bizarre, fun-loving folks with a truly unusual view of the world.



THE FORMAT

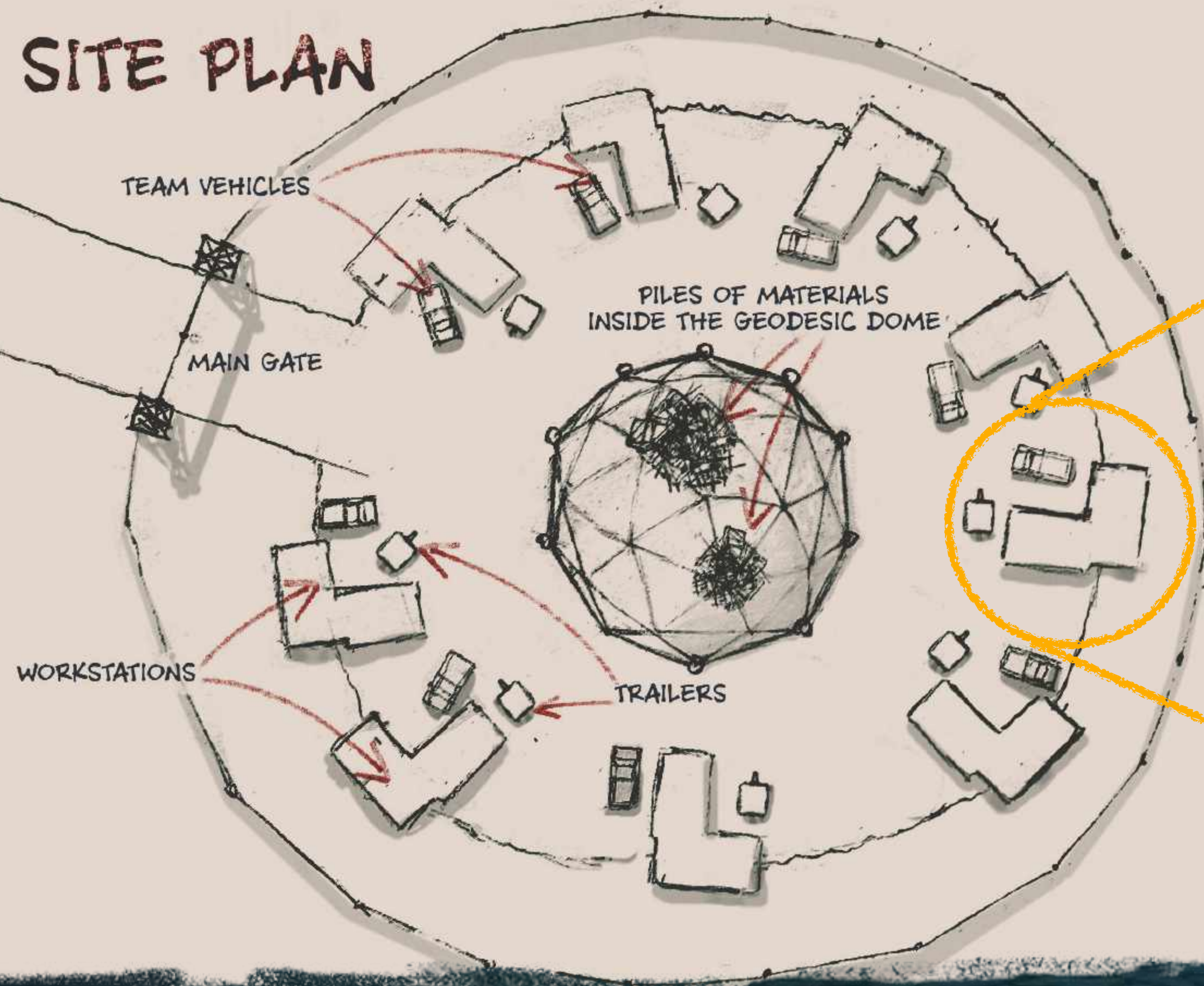
- **TEN TEAMS** of two compete over eight weeks of intense arched competition.
- Each week (episode) presents **ONE GRAND SCULPTURAL CHALLENGE**. Builds grow in scale and complexity from week to week. Builds are constructed around two elements:
 - **THE SUBJECT** is the build theme that dictates what kind of piece the teams must create.
 - **THE OBJECTS** are the materials that must be showcased in the creation.
- **There are 3 rules to BEAUTIFUL JUNK:**
 1. The sculptures must fill the build platform at each workstation.
 2. Teams must use **THE OBJECTS** found in the junk GEO-DOME to build **THE SUBJECT**. Teams may also use junk from **THE PILE**, a mountain of building and industrial waste at their disposal.
 3. The sculptures must be completed before the time runs out.
- Each team builds at a workstation loaded with industrial work equipment, a tool shed, and a Frankenstein-d junk vehicle, called an **ART RIG**.
- To complete the challenge, teams must hitch their sculptures to their **ART RIGS** and get them to **THE JUDGEMENT ZONE** to be considered.
- The winning team is awarded **THE SCRAP MEDAL** that will provide a very special material/tool advantage in the next challenge.
- Each week, one team eliminated until three teams are left for the finale.
- The winning team takes home **\$100,000**.



A dark, atmospheric landscape with a full moon and silhouetted trees. The scene is dimly lit, with a full moon glowing in the sky. The ground is covered in shadows and sparse vegetation. The overall mood is mysterious and somber.

THE WORLD

SITE PLAN



BEAUTIFUL JUNK is set on an ominous desert plain. The majority of the work takes place in the **THE CREATION SECTOR**, loaded with storage containers set in a ring around a central pile of industrial waste, known as **THE PILE**.

The encircling storage containers are team workstations. Every station is equipped with hand tools, power tools, table saws, drill press and chop-saw, compressors, and paint guns. Hardware, paint, sandpaper and anything else that can be used as a fastener or finisher must be salvaged from the junk piles.

Each station is also equipped with a run down vehicle - a small pickup truck or minivan. The teams use their vehicles to collect materials for their sculptures, throwing smaller items in the bed, and jerry-rigging racks and other methods to carry large loads with the welding tools at their stations. Teams are free to customize their vehicles at will. Most importantly, the teams must use these vehicles to transport their art to **THE JUDGEMENT SECTOR** before the time is up.

Seeing as this isn't traditional art, there are non-traditional tools as well. A shared station with pyrotechnic equipment can be used by artists who are thinking explosively. Also, in the shared station are some high tech tools - a CNC and a water jet, for next level creations.

THE JUDGEMENT SECTOR is where the teams must transport their art to have it judged. The hosts and judges have their own vehicle, which they use to inspect the artwork and to move from the **THE CREATION SECTOR** to **THE JUDGEMENT SECTOR**. It is a converted bus with an open platform.

Location



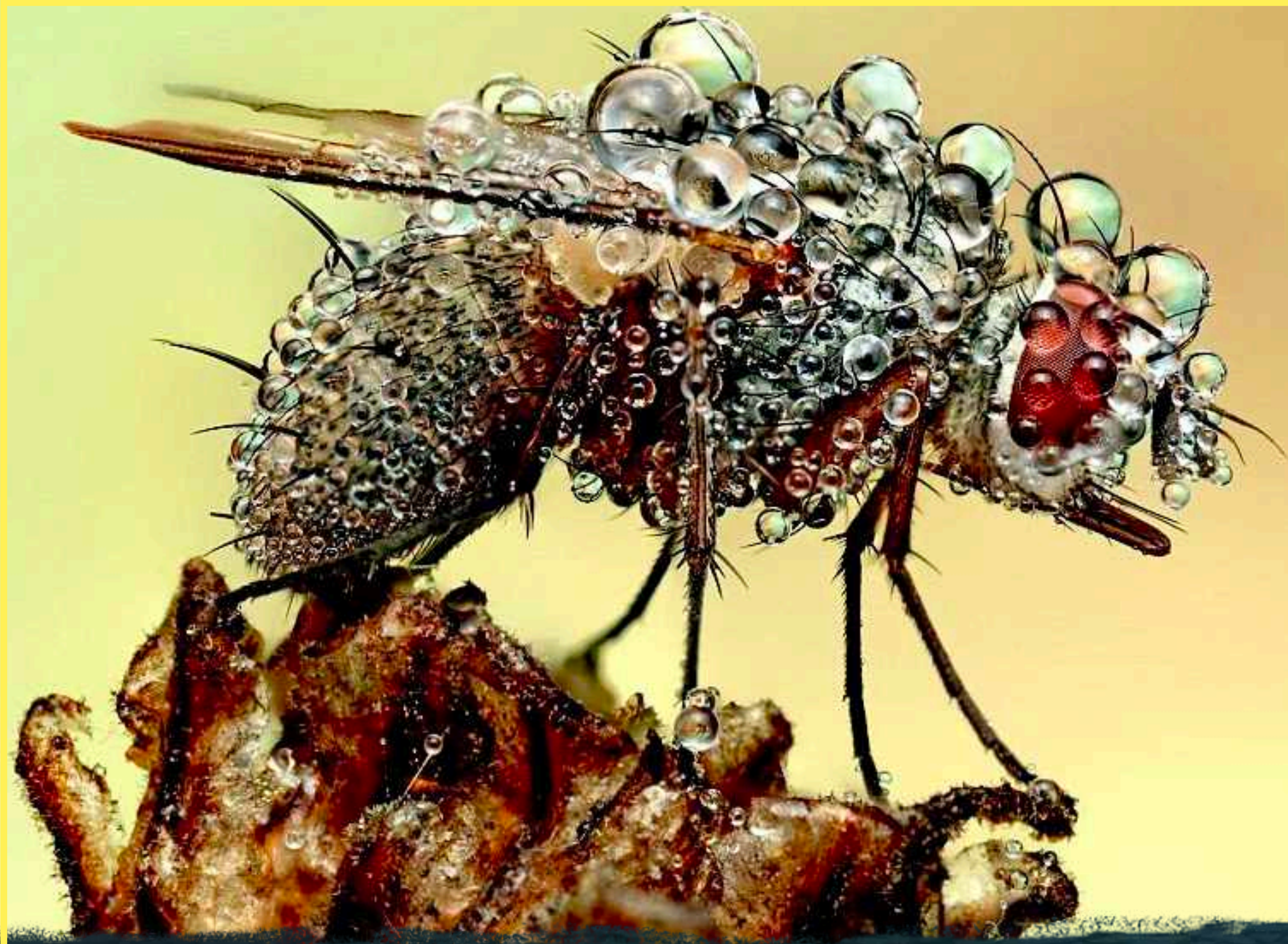
CHALLENGES



SUPERHERO X TOY FACTORY

THE SUBJECT Any Superhero Imaginable

THE OBJECTS Old unloved dolls, action figures, plush animals, and hot wheels + tracks, etc.



MICROSCOPIC X THE SHIPYARD

THE SUBJECT The Supersized Microscopic - *from single-celled life to insects*

THE OBJECTS Ropes, buoys, rivets, pallets, aircraft cable, portholes and planking



SPACE TRAVEL X ABANDONED SIGNS

THE SUBJECT The Future of Space Travel

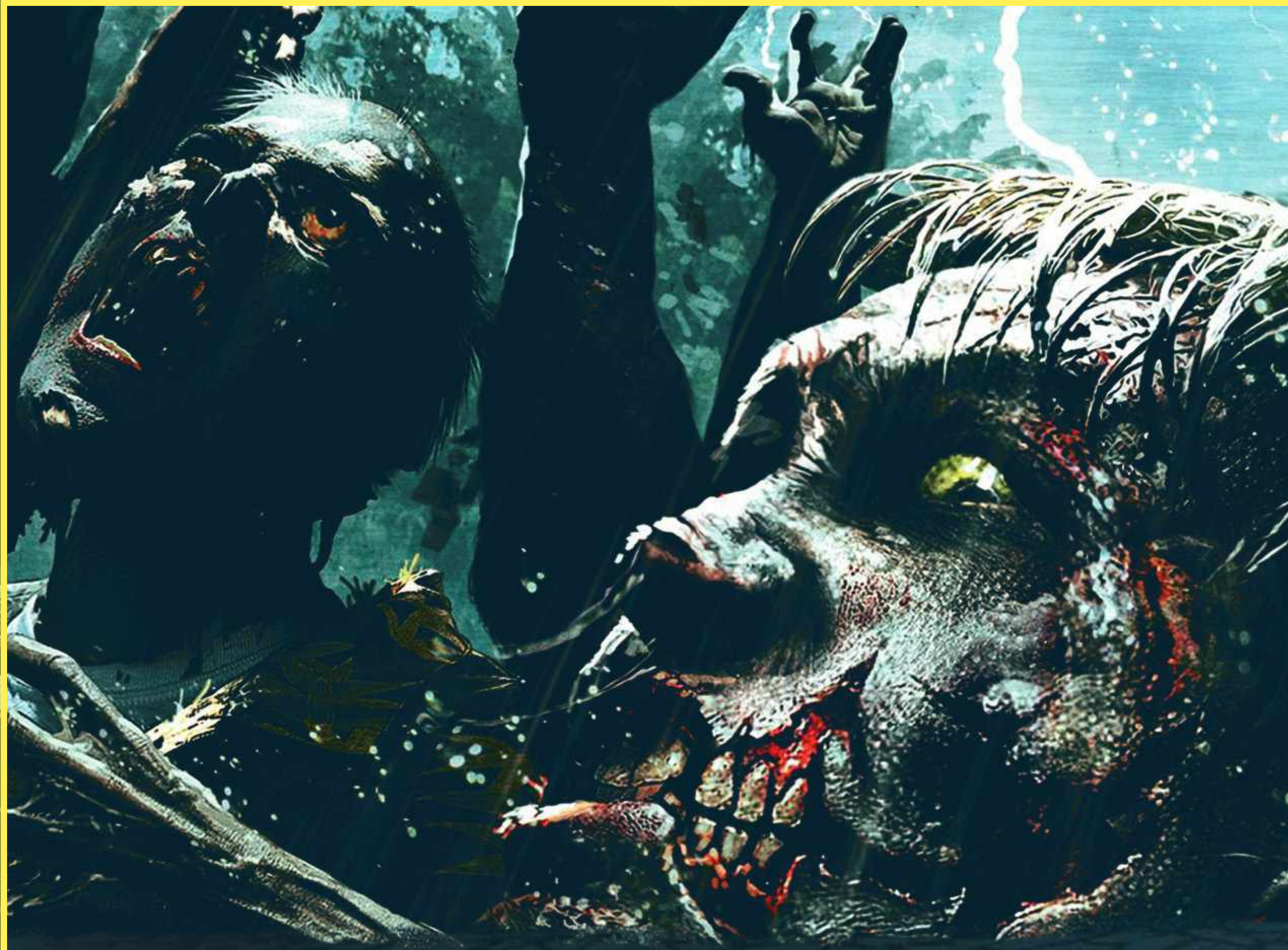
THE OBJECTS Abandoned business signs, old neon lights, piles of light bulbs, wood, fragile glass



FAIRY TALES X BEACH WASTE

THE SUBJECT Magical & Mystical, Fairy Tale Scenes and Creatures

THE OBJECTS Tons of plastics, ropes, dinghies, life preservers, and bumpers



ZOMBIE APOCALYPSE X SUBURBAN GARAGE

THE SUBJECT Zombie Apocalypse, be it a large diorama or a single massive sculpture

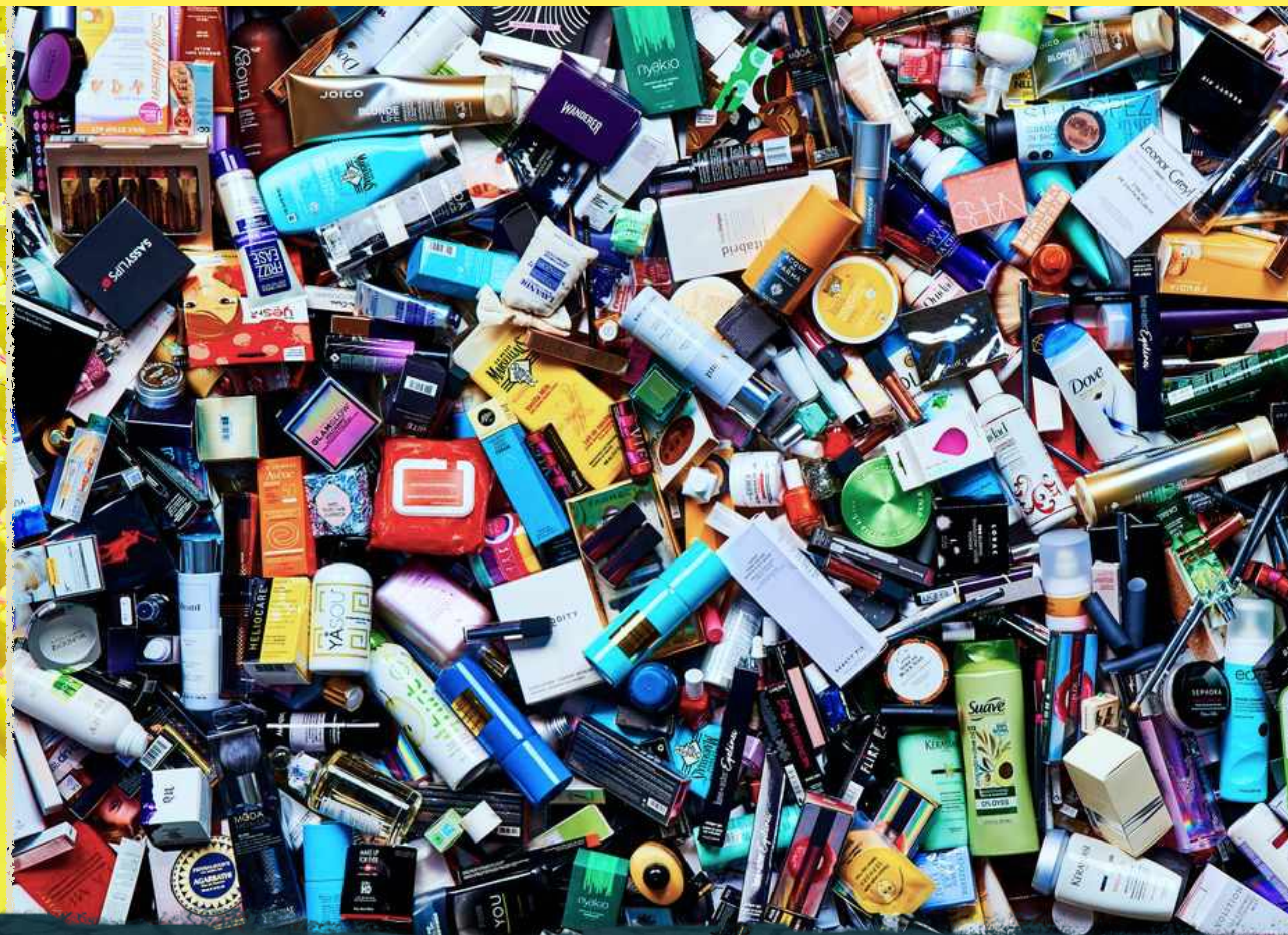
THE OBJECTS Bicycles, lawnmowers, frisbees, gas cans, skis, cardboard, planting pots



DREAM HOMES X SCRAP METALS

THE SUBJECT The home of your wildest dreams

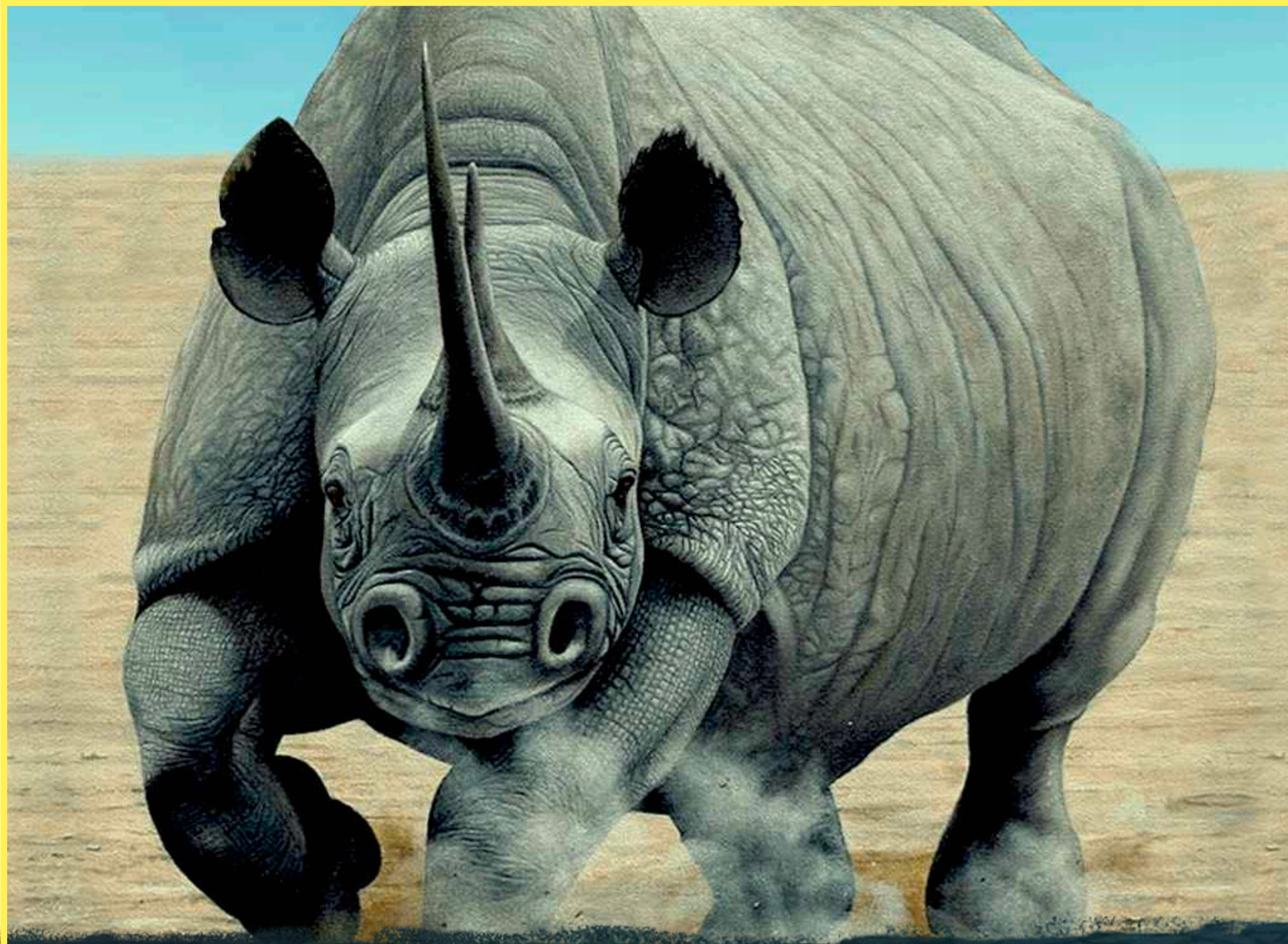
THE OBJECTS Tons of sheet metal, copper, aluminums, steel, brass, carbide



LOVE X COSMETIC WASTE

THE SUBJECT Extraordinary Expressions of Love

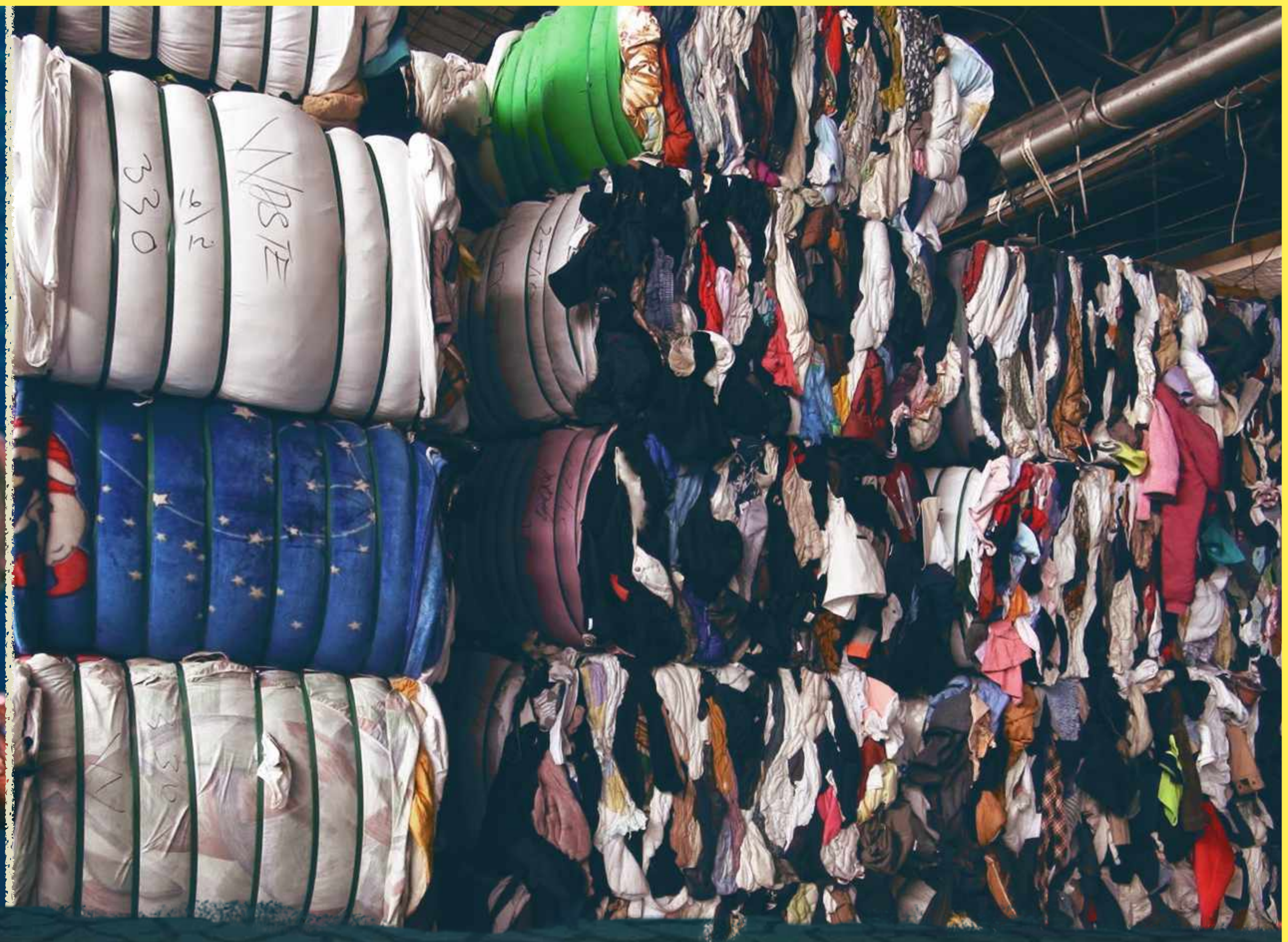
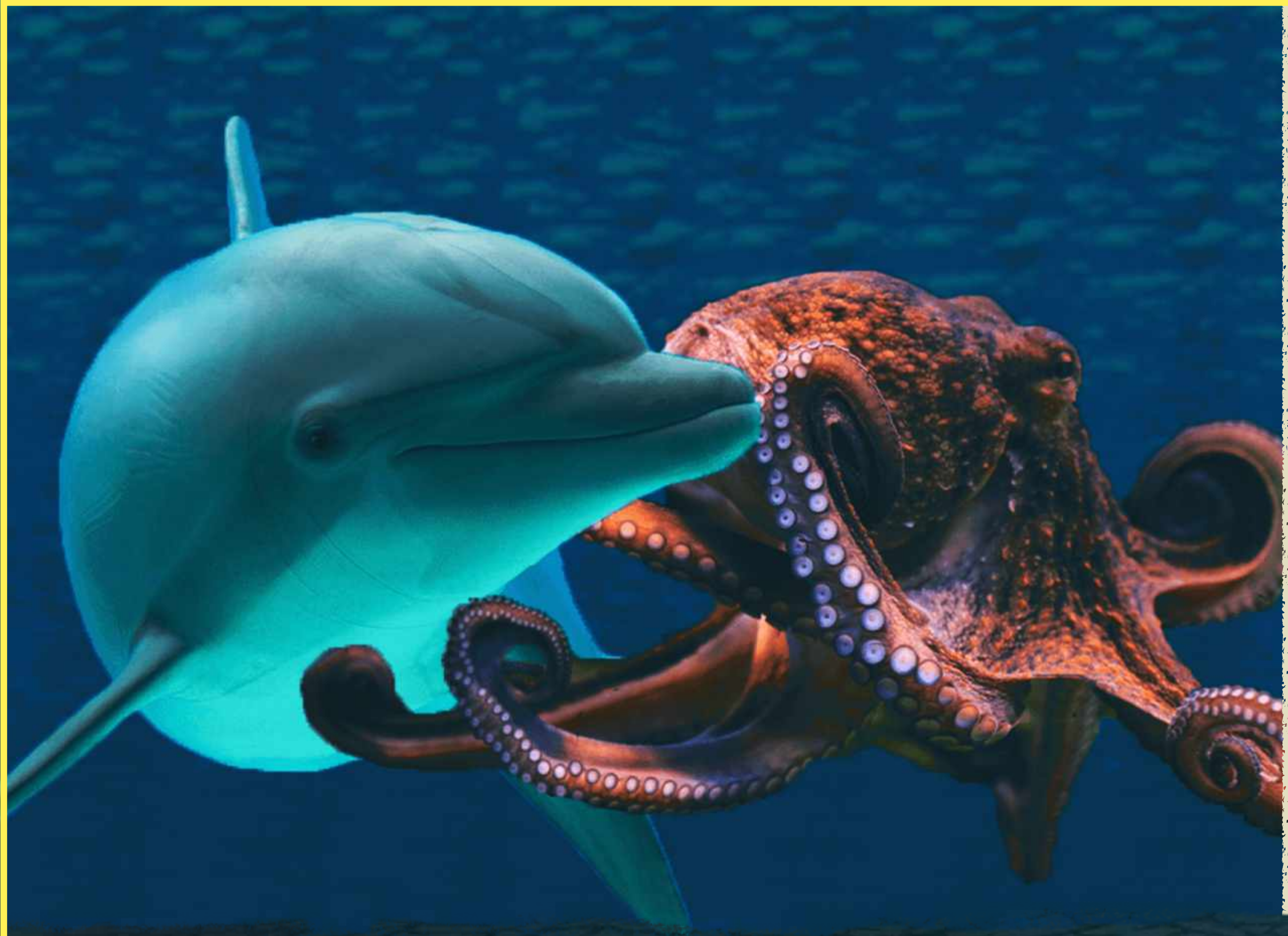
THE OBJECTS Wasted cosmetic supplies, makeup, hair brushes, shampoo bottles, etc.



WILD ANIMALS X WOOD PILE

THE SUBJECT Wondrous and Wild Animals

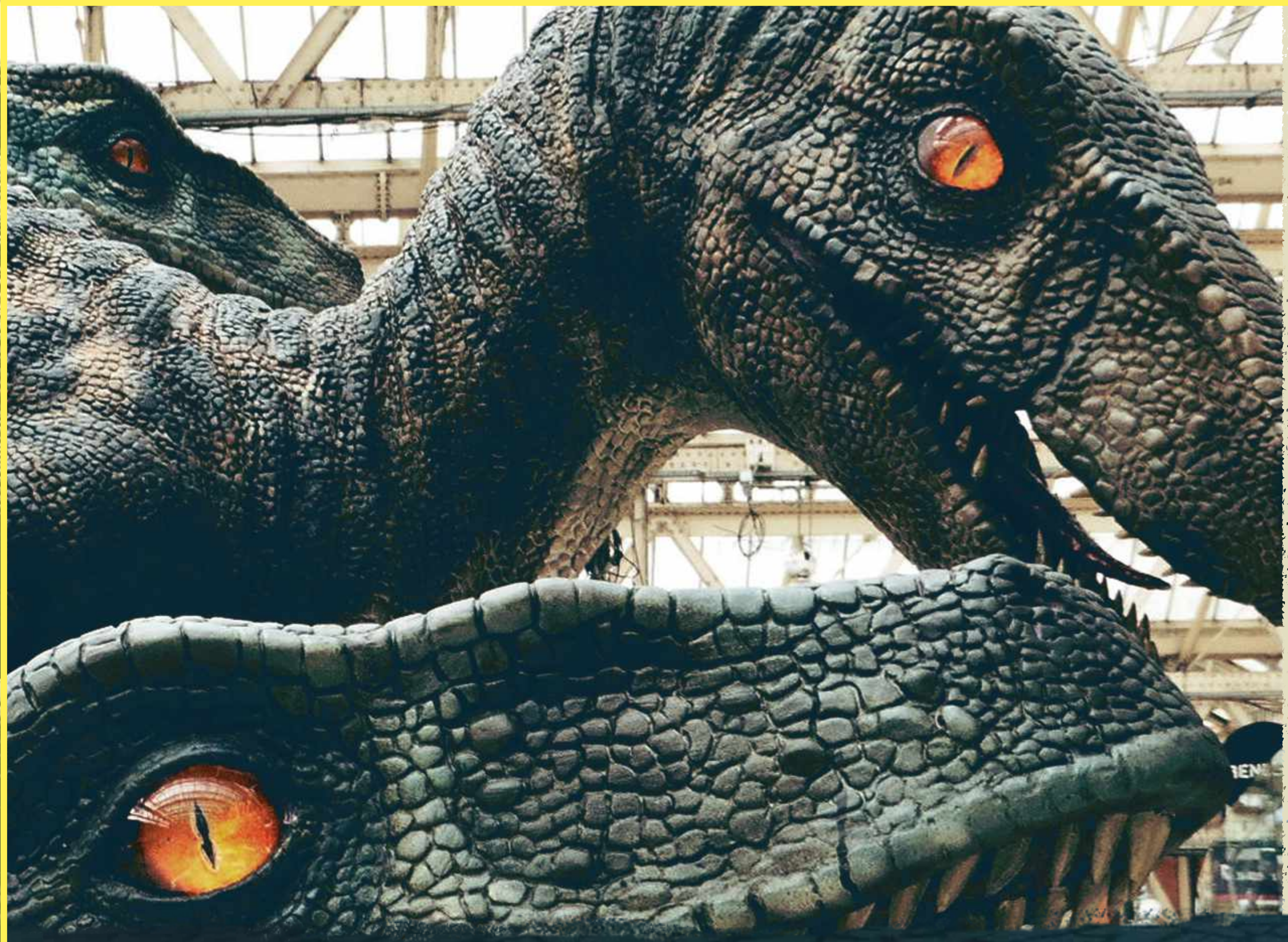
THE OBJECTS Corroded loose wood, pallets, old doors, home structure, furniture, etc



DEEP BLUE SEA X GARMENT FACTORY

THE SUBJECT Scenes and Creatures from the Deep Underwater World

THE OBJECTS Giant bolts of fabric, spools of threads, dress patterns, clothing racks, buttons and zippers



DINOSAURS X ELECTRONICS

THE SUBJECT Dinosaurs in their Prehistoric Habitat

THE OBJECTS Circuit boards, monitors, spools of cable, keyboards, cell phones, and speakers



PARANORMAL X AUTO WRECKING YARD

THE SUBJECT A Haunting Experience

THE OBJECTS Car and truck junk, from upholstery and stuffing, to rubber and metal and glass



THE CIRCUS X AMUSEMENT PARK

THE SUBJECT The Dazzling Circus - Built to Amaze!

THE OBJECTS Rollercoaster parts, strange old signage, hoops, balls, bottles, bottles from carnival games



TALIENTI



Zoe Kravitz (Host)



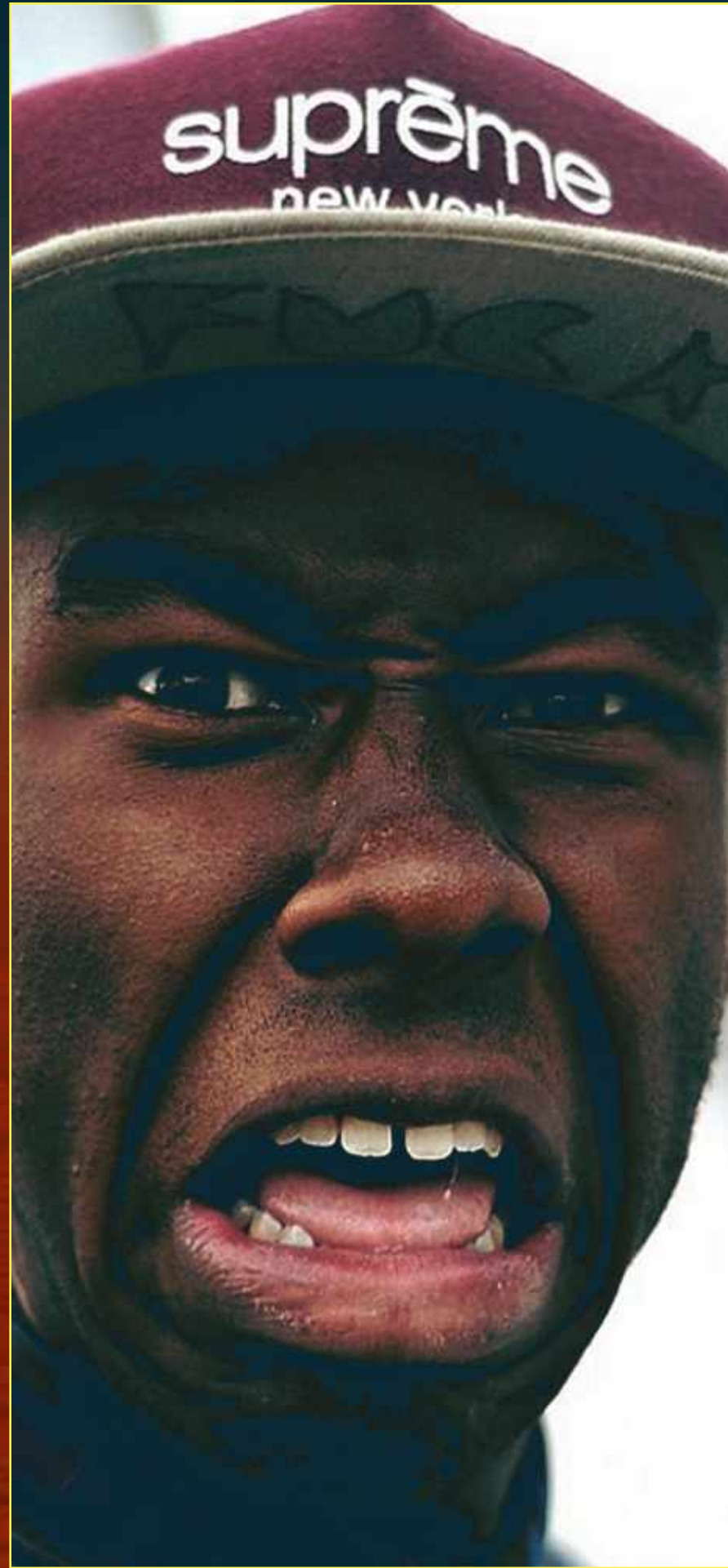
Sharon Needles (Host)



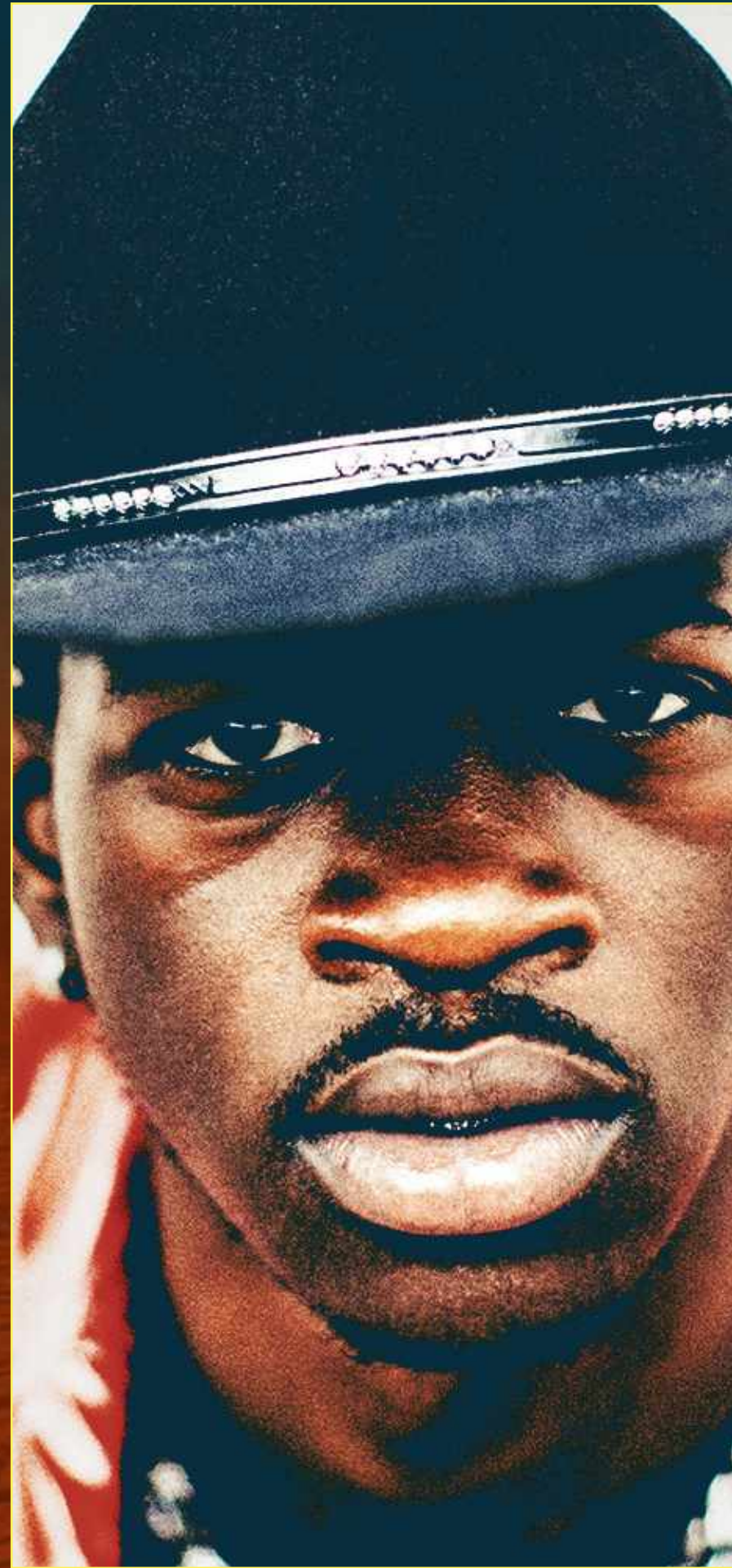
Brooks Atwood (Head Judge)

Hosts & Judge

Running the ceremonies as hosts are *Drag Race* winner and recording artist Sharon Needles, as well as *Mad Max* actress, musician, and model, Zoe Kravitz. While neither may be an expert on traditional arts, they definitely know ingenuity and a great performance when they see it. Our Head Judge is the eccentric, multi-disciplinary creative and design genius, Brooks Atwood.



Tyler, The Creator



Lil Nas X



Missy Elliott



Run the Jewels



Sia

Guest Judges

The BEAUTIFUL JUNK guest judges are dynamic, memorable, and creatively disruptive celebrities. They are successful outsiders in their own right, well respected artists, and experts on the subject of spectacle.



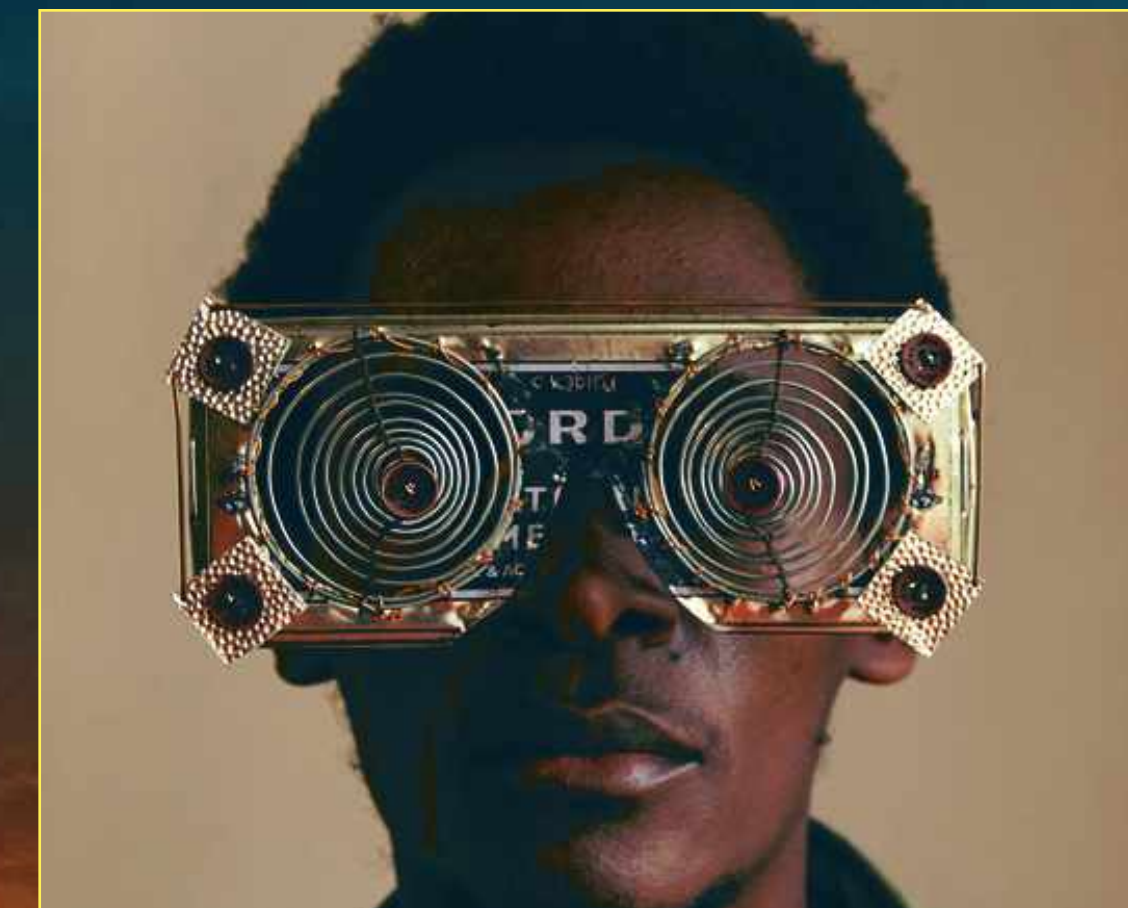
John Lopez (USA)



Kenny Irwin (USA)



Bordalo Segundo (Portugal)



Cyrus Kibaru (Kenya)



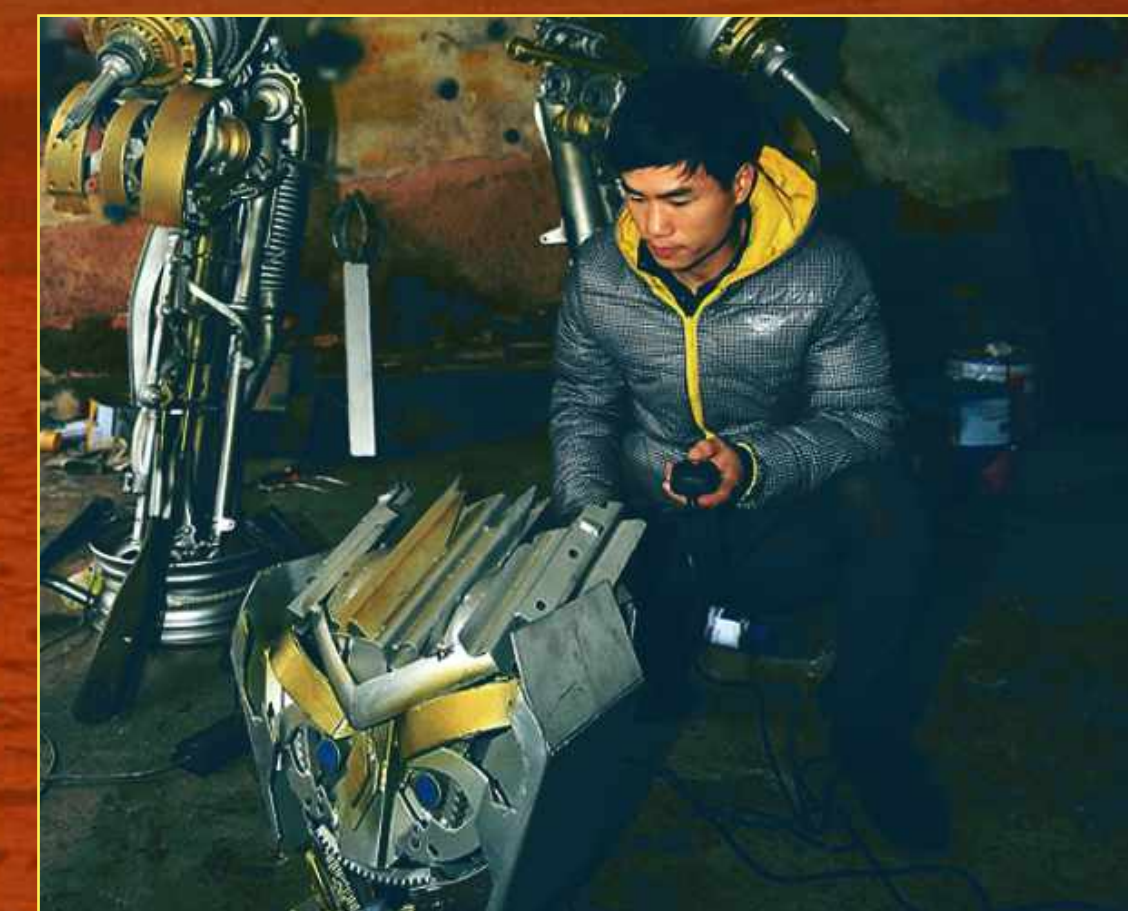
Angela Haseltine Pozzi (USA)



Chie Hitotsuyama (Japan)



Ferenc Gregor (USA)



Yu Zhilin (China)

COMPETITORS

Junk Art is a legitimate and bombastic form of artistic expression, and its practitioners are the wild characters of BEAUTIFUL JUNK. They are real, highly skilled, totally bizarre, fun-loving folks with a truly unusual world view. The teams (of two) are plucked from around the world for their relentless passion, their ingenuity and skill, and their ability to think and build in scale.



THE SCULPTURES



THE SCULPTURES



THE SCULPTURES



THE SCULPTURES



**BEAUTIFUL
JUNIK**